

EVANGELICAL SCHOOL FOR THE DEAF, INC. ESCUELA EVANGELICA PARA SORDOS

Missionary Intro Information Pages

MISSIONARY STATUS

All E.S.D. workers are missionaries, called to serve our Lord and supported by faith gifts from churches, organizations and individuals. Each missionary is responsible for his or her own financial base. Financial gifts should be designated for the missionary by name on a separate paper from the check and sent through either the E.S.D. office (US\$) or the W.M.D. office (Canadian\$) to be receipted for income tax purposes.

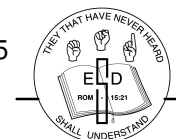
MISSIONARY QUALIFICATIONS OF E.S.D.

1. You must be a born-again Christian, agree with and adhere to the WMD Statement of Faith.
2. You should be over 21 years of age to be considered for full-time service.
3. Sign-language fluency is a must for teachers and classroom assistants. Lesser degrees of sign skill are accepted for other jobs positions but the ideal is fluency in ASL or pidgen signed English (PSE) and understanding of Deaf culture before arrival on the mission field.
4. Completion of the World Mission to the Deaf Missionary Application.
 - References and recommendations from personal, church ministries and work areas desired.
 - You may be asked to submit the results of a recent physical exam if there are any health problems.
 - You may also be asked to submit the results of a psychological test or personality profile upon acceptance as a missionary under W.M.D.
5. Deafness or hearing-impairment is not required but we are seeking Deaf or hard-of-hearing adults who can teach (Bible, academics or vocational courses), counsel, and live as role models for the deaf student population we serve. Hearing applicants are also welcome to apply.

ESD CALENDAR

The school year normally runs from runs from the beginning of August through the last week of May. There are long weekends (usually one per month) as well as Thanksgiving, Christmas and Easter holidays for the students. Some of these days are also holidays for the staff. Others are workdays during which odd jobs, lesson planning and team meetings may be held.

All staff are expected to be on the school grounds and ready for work or training no less than 2 weeks before classes begin. All staff are expected to be available for three weeks following the school year of service unless otherwise arranged with the school administrator.



LENGTH OF MISSION SERVICE AND VACATIONS

New missionaries are asked for a 3-year commitment (exceptions are made for people on a sabbatical year's leave from another position). The first year involves much training and learning of the job areas, people and responsibilities. The second and third years, the missionary is able to do the job more independently and add suggestions for improving the ministry. During the summers, a three to five week vacation/holiday may be scheduled by consultation with the school administrator.

Continuing service missionaries (beyond 3 years) may take between 6 and 8 weeks every summer for deputation, personal development, and/or rest and relaxation. It is recommended that churches be visited every 2 years if possible. Some missionaries will find it difficult to visit every church every 2 years, and then a rotating 3-year schedule may be advisable. Continuing service missionaries are asked to NOT make plans until dates are presented each spring by the administration or until consulting with the E.S.D. administrator.

FINANCES

Each missionary or missionary family is responsible to provide their own support base. This support may be raised through your home church or chapel, related churches, friends, family or charitable donations from other organizations. If you have any questions about raising support, you may wish to consult the WMD Ethical Fundraising and Financial Accountability Code, which is available through the WMD and ESD offices.

MONTHLY FINANCIAL EXPENSES

EXPENSES for a single missionary living off of the ESD compound

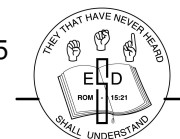
Monthly

Rent	\$650.00	(\$325 if there is someone to share)
Phone	\$ 25.00	base rate plus any long distance calls
Health Insurance	\$??.00	cost depends greatly on provider
Food and supplies	\$250.00	
Operational/Ministry projects)	\$ 50.00 to \$150.00	(things you will pay out for classes or ministry projects)
Cable TV	\$ 30.00	minimum monthly
Entertainment	\$ 20.00	
Internet service	\$ 20.00	minimum monthly
Gas in the car	\$??.00	
Car insurance	\$??.00	

Total in U.S. \$= \$850 to \$1175.00 to \$1325 (note that this does **NOT** include car insurance or gas)

If on campus housing is available, the rent can be reduced to \$150/month or will be based on a sliding scale depending on the amount of support a missionary receives. A minimum of \$500 U.S. is recommended for those missionaries with on-campus housing. More realistically, upwards of \$900 (U.S.) per month is a solid goal for long-term missionaries.

Normally, no housing is available on the school campus except for residence counselors and the maintenance/cook couple. There is a small guest apartment for short-term visitors. Rented housing in the community runs from \$550 to \$1000 depending on the area in which you may choose to live. Utilities are most often **NOT** included in rent payments. Depending on where you find to rent, you may need to add an additional \$500 for housing.



HEALTH INSURANCE

Canadian missionaries can be included in the medical insurance plan that WMD has arranged with the monthly rate deducted automatically from incoming gifts.

American missionaries need to arrange their own medical plan. The individual missionary or sending church will pay this out. There are several good companies who work with missionaries on a short or long term basis. Most will accept quarterly payments by credit card. The school may be able to help and allow you a monthly deduction from your incoming support.

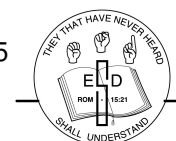
MOVING AND SET UP EXPENSES

A car should be counted into the costs of moving to the mission field. Reliable used cars are available for \$3000 (more or less). If you have a reliable car, you may want to ship it. You will pay an import tax on any car or household items shipped. Items sent by mail are not taxed.

Other re-location items to consider include:

ITEM	APPROXIMATE COST
Furniture: table, couch, dressers, kitchen items, TV, radio, towels, bedding, etc. (many rentals come equipped with a refrigerator and stove)	depends on your tastes and what your expenses allow
Telephone	\$50+ installation, \$25 per month basic line rental
Cable service for TV	\$35 per month + installation fee
Utilities	Deposits required for electricity and water monthly costs depend on usage
Hurricane preparedness items	\$50 and UP (depending on the severity preparations you want to make!)
Other miscellaneous costs:	
Airfare	\$500.00 (approx. for round trip ticket)
Car maintenance	\$400.00+ (per year depending on the car)
Clothing/Shoes allowance	\$200.00 (per year)
Books /CDs allowance	\$150.00 (per year)
Glasses, yearly eye exam	\$100.00
Dental	\$?. <u>00</u>
Emergency medical	\$?. <u>00</u>
Personal education by correspondence	\$?. <u>00</u>
Retirement fund	\$?. <u>00</u>

In all, you may need a minimum of \$1050 as a single person (most likely singles could arrange to share a rental house or apartment and split the costs) or \$2000+ for a family per month. This does not include educational costs for home schooling or private schools for missionary kids. Puerto Rico does provide free public education in Spanish. These estimates should be viewed in light of your own family situation and needs and an additional sum per child should be considered.



ABOUT ILLNESS AND HEALTH CONCERNS

Puerto Rico does have some quality doctors and hospitals. Many missionaries have experienced doctors and facilities that have lower standards than those they are accustomed to in the US or Canada.

Before you enter full-time missions service, it is advisable for you to have a thorough medical examination. If you know of any existing condition that would limit your ability to serve fully, you must make known that fact and prayerfully reconsider your application for service.

Duty coverage is possible if you should become sick due to a cold, virus or other unforeseeable illness and not be able to perform your scheduled duties. We do not have the luxury of substitute personnel to cover duty times. Each missionary is asked to evaluate their illness and ability and then to report incapacitating illnesses to their supervisor who will handle the rescheduling of duties.

CONTINUING SERVICE MISSIONARIES

The continuing service missionary will not always be right, will not always do right or will not always live up to your expectations. Judge not. The continuing service missionary may not have had a furlough or an extended non-stressful time in years. The continuing service missionary may be a tired, wounded soldier in need of gentle ministrations and understanding. Part of your area of service is to your fellow missionary.

Your input is desired and expected but the continuing service missionary has seniority. Go slowly. Speak wisely. And respect this servant of God who has given 5, 10, 20, 30 years to this ministry. Be open to learning from the continuing service missionary and in turn, the continuing service missionary will be open to your suggestions.

MAINTAINING CHRIST-HONORING RELATIONSHIPS AMONG MISSIONARIES

If God has called you to serve Him here, you must give your best with a wholehearted desire to serve **the Lord**. You will need much time in prayer for His wisdom and strength to do so. As a missionary, your life is not your own. It belongs to God and to the mission to which God has led you to serve.

Often the mission field is compared to life in a fish bowl! Your fellow missionaries know all about you. The people you minister to know all about your life. The people who live next door to you watch your life and habits when you are away from the mission campus. The folks 'back home' want reports about souls saved and spiritual battles won. Be strong in the Lord and He will teach you much about Himself as you serve Him on the mission field.

